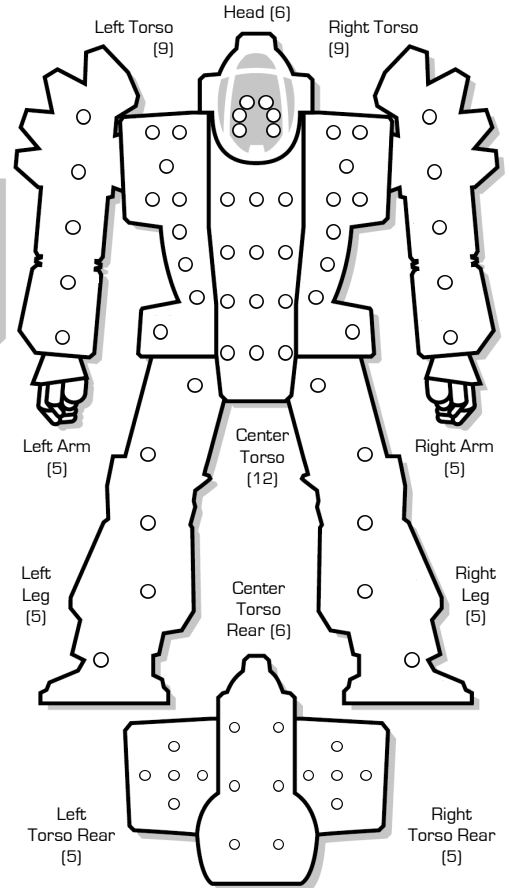


BATTLETECH™

BATTLEMECH RECORD SHEET

Armor Factor - 72

ARMOR DIAGRAM



'MECH DATA

Type: Shadow Hawk SHD-2D

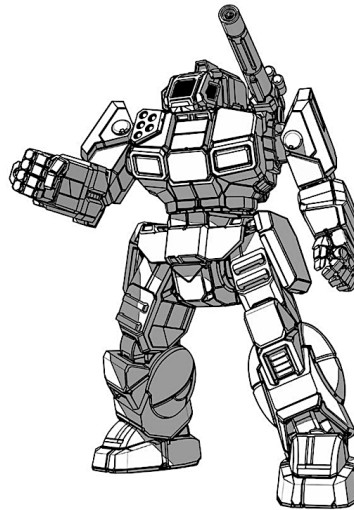
Movement Points: **Tonnage:** 55
 Walking: 5 **Tech Base:** Inner Sphere
 Running: 8 **Rules Level:** Introductory
 Jumping: 3 **Role:** Striker

WARRIOR DATA

Name: _____
 Gunnery Skill: _____ Piloting Skill: _____
 Hits Taken

1	2	3	4	5	6
3	5	7	10	11	Dead

 Consciousness#



Weapons & Equipment Inventory [hexes]

Qty	Type	Loc	Ht	Dmg	Min	Sht	Med	Lng
1	SRM 2	H	2	2/Msl	—	3	6	9
1	SRM 2	CT	2	2/Msl	—	3	6	9
1	LRM 5	RT	2	1/Msl	6	7	14	21
1	Autocannon/5	LT	1	5	3	6	12	18
1	Medium Laser	RA	3	5	—	3	6	9
1	Medium Laser	LA	3	5	—	3	6	9

BV: 899



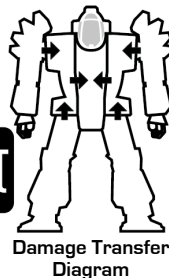
CRITICAL HIT TABLE

- Left Arm**
- Shoulder
 - Upper Arm Actuator
 - Lower Arm Actuator
- 1-3
- Hand Actuator
 - Medium Laser
 - Roll Again
- 4-6
- Roll Again
 - Roll Again
 - Roll Again
 - Roll Again
 - Roll Again
 - Roll Again
- Left Torso**
- Jump Jet
 - Autocannon/5
 - Autocannon/5
 - Autocannon/5
 - Autocannon/5
 - Ammo (AC/5) 20
- 1-3
- Ammo (SRM 2) 50
 - Roll Again
 - Roll Again
 - Roll Again
 - Roll Again
 - Roll Again

- Head**
- Life Support
 - Sensors
 - Cockpit
 - SRM 2
 - Sensors
 - Life Support
- Center Torso**
- Fusion Engine
 - Fusion Engine
 - Fusion Engine
 - Gyro
 - Gyro
 - Gyro
- 1-3
- Gyro
 - Fusion Engine
 - Fusion Engine
 - Fusion Engine
 - Jump Jet
 - SRM 2
- 4-6

- Right Arm**
- Shoulder
 - Upper Arm Actuator
 - Lower Arm Actuator
 - Hand Actuator
 - Medium Laser
 - Roll Again
- 1-3
- Roll Again
 - Roll Again
 - Roll Again
 - Roll Again
 - Roll Again
 - Roll Again
- 4-6
- Right Torso**
- Jump Jet
 - Heat Sink
 - Heat Sink
 - Heat Sink
 - LRM 5
 - Ammo (LRM 5) 24
- 1-3
- Ammo (SRM 2) 50
 - Roll Again
 - Roll Again
 - Roll Again
 - Roll Again
 - Roll Again

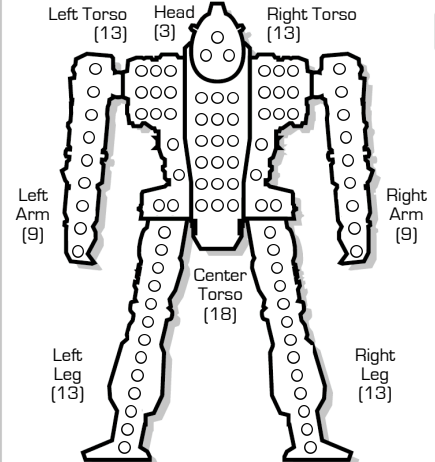
Engine Hits ○○○
 Gyro Hits ○○
 Sensor Hits ○○
 Life Support ○



- Left Leg**
- Hip
 - Upper Leg Actuator
 - Lower Leg Actuator
 - Foot Actuator
 - Roll Again
 - Roll Again

- Right Leg**
- Hip
 - Upper Leg Actuator
 - Lower Leg Actuator
 - Foot Actuator
 - Roll Again
 - Roll Again

INTERNAL STRUCTURE DIAGRAM



HEAT DATA

Heat Level*	Effects	Heat Sinks:
30	Shutdown	14
28	Ammo Exp. avoid on 8+	Single
26	Shutdown, avoid on 10+	○○○
25	-5 Movement Points	○○○○
24	+4 Modifier to Fire	○○○○○
23	Ammo Exp. avoid on 6+	○○○○○
22	Shutdown, avoid on 8+	○○○○○
20	-4 Movement Points	○○○○○
19	Ammo Exp. avoid on 4+	○○○○○
18	Shutdown, avoid on 6+	○○○○○
17	+3 Modifier to Fire	○○○○○
15	-3 Movement Points	○○○○○
14	Shutdown, avoid on 4+	○○○○○
13	+2 Modifier to Fire	○○○○○
10	-2 Movement Points	○○○○○
8	+1 Modifier to Fire	○○○○○
5	-1 Movement Points	○○○○○

Heat Scale

Heat Level	Overflow
30*	
29	
28*	
27	
26*	
25*	
24*	
23*	
22*	
21	
20*	
19*	
18*	
17*	
16	
15*	
14*	
13*	
12	
11	
10*	
9	
8*	
7	
6	
5*	
4	
3	
2	
1	
0	